

QUIRI Refrigeration CF80 TYPE Compressors & compression units

RELIABLE, STURDY AND EFFICIENT

all refrigerants
all installation types
all activity sectors



AXIMA
REFRIGERATION

A solution to all your refrigeration requirements

CF 80 units draw on the extensive experience of mechanical engineers who have developed reliable, sturdy and efficient compressors that are perfectly suitable for all refrigeration systems using new environmentally-friendly refrigerants.

Thus, you can rely on these dependable compressors, which have demonstrated their adaptability and reliability in the many thousands of systems already in use.

Light alloy piston with two compression rings and an oil scraper ring. Treated steel piston pin.

Removable cylinder sleeves made of special wear-resistant centrifuge cast-iron.

Matrix steel connecting rods with anti-friction bearings and bronze bushes.

Easy to clean intake filter.

Treated wear-resistant G3 cast-iron crankshaft.

Steel crankshaft bearings with anti-friction alloy coating, with the facility to use a needle bearing reinforcement.

Capacity unloader.

Single-piece rotary shaft seal with metal bellows for maximum tightness.

Technical characteristics

TYPE		6 CF80	8 CF80
Cylinders	Number	6	8
	Bore diameter (mm)	80	80
	Stroke (mm)	70	70
	Swept volume at 1450 rpm m ³ /h	186	248
Number of capacity unloaders that may be fitted		4	5
Possible power variation		33-50-66	37-50-67
		83-100	75-87-100
Casing electrical heater power (watts)		500	500
Casing oil capacity (liters)		17	20

Limits of use

Compression rate	15°
Oil temperature	70/75°C
Safety thermostat	75°C
Discharge temperature	120/125°C
Max. discharge pressure	21 bars
Safety thermostat	125°C
Max. differential pressure	18 bars

Dimensional characteristics of bare CF 80 compressors

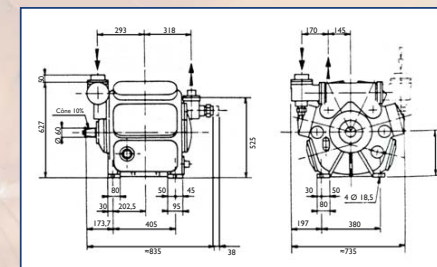
Compressor	L mm	H mm	D mm	weight kg
6 CF 80	820	627	710	365
8 CF 80	835	627	735	480

Our bare compressors are delivered with :

- Plain shaft end, without coupling, thermostatically controlled casing electrical heater.
- Integrated discharge temperature switch.
- Nitrogen safety load (1 bar) for long-term storage.
- Standard RAL 5012 white paint.

Optional features :

- Needle bearing (for intake pressure over 4.5 bar), suction and discharge valves, water cooled cylinder heads, capacity unloaders.



Type 8 CF 80

Dimensional characteristics of complete CF 80 units +

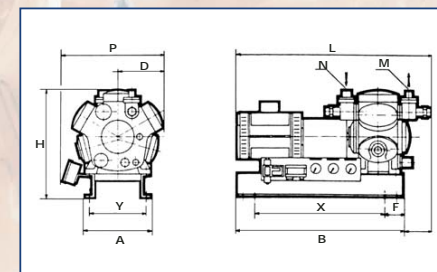
Unit	X mm	Y mm	L mm	H mm	P mm	A mm	B mm	weight kg
6 CF 80	1100	510	1600	845	820	580	1420	530
			1750					
8 CF 80	1100	510	1750	860	820	580	1420	620

CF 80 units are supplied with :

- Oil separator, coupling (direct or pulley-belt), coupling guard, control panel, valves and connections.

Optional features :

- Unloaded start-up, suction and discharge temperature gauges, manual oil fill-up pump



Type 8 CF 80

France
AXIMA REFRIGERATION SA

6, rue de l'atome
F - 67800 Bischheim
Tel : + 33 (0) 3 88 19 19 00
Fax : + 33 (0) 3 88 19 19 49
Compresseur@aximaref.com
www.aximaref.com

Germany
AXIMA REFRIGERATION GmbH

Kemptener Strasse 11-15
D - 88131 Lindau
Tel : + 49 (0) 8382 70 61
Fax : + 49 (0) 8382 70 64 10
Info-refde@axima.eu.com
www.axima.eu.com

Belgium / Luxembourg
AXIMA REFRIGERATION N.V.

Grencobel ®
Slachthuislaan 23
B - 2060 Antwerpen 6
Tel : + 32 (0) 3 235 11 44
Fax : + 32 (0) 3 235 87 46
Info@grencobel.be
www.grencobel.be

Netherlands
GTI Koudetechnik bv

Industrieweg 1
NL - 2712 LA Zoetermeer
Tel: + 31 79 346 27 27
Fax : + 31 79 346 27 07
Info-koudetechnik@gti-group.com
www.gti-group.com

Switzerland
AXIMA REFRIGERATION AG

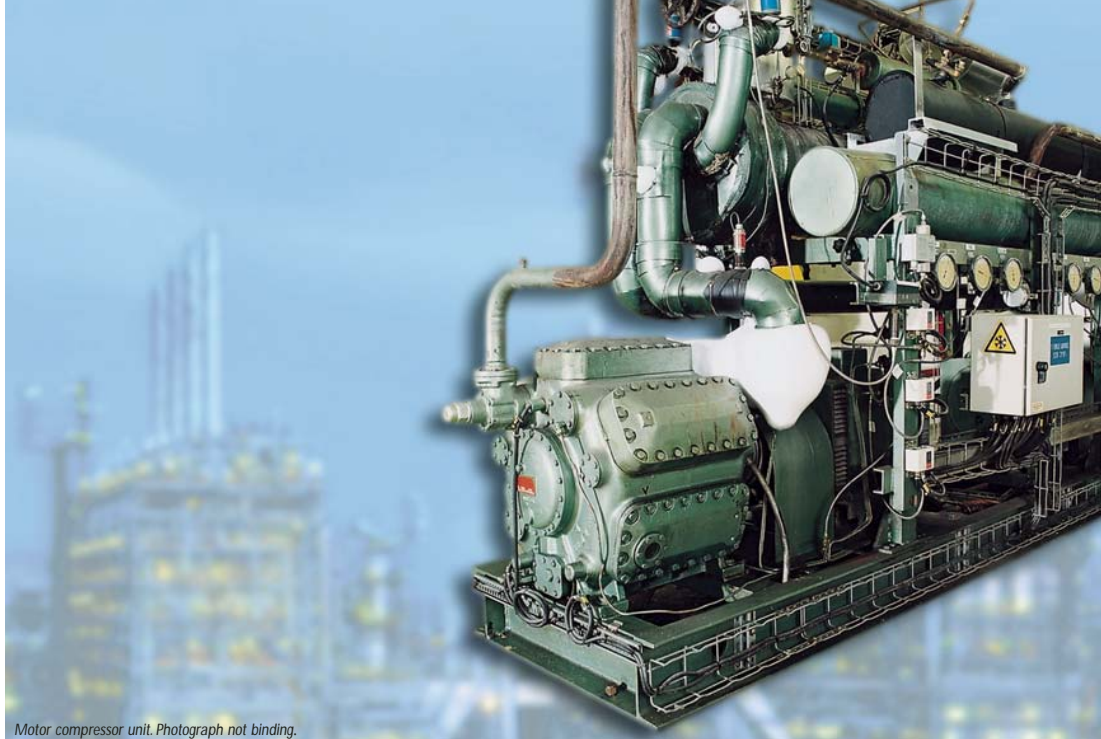
Neuwiesenstrasse 15
CH - 8400 Winterthur
Tel : + 41 (0) 52 262 80 80
Fax : + 41 (0) 52 262 00 03
Info-refch@axima.eu.com
www.axima.eu.com

Spain / Portugal
AXIMA SISTEMAS

E instalaciones SA
Paseo de la Castellana, 163
ES - 28046 Madrid
Tel : + 34 91 749 82 00
Fax : + 34 91 749 83 01
Info-axisi@axima.eu.com
www.axima.eu.com

Austria
AXIMA Kältetechnik Ges.mBH

Langegasse 19
A - 6923 Lauterach
Tel : + 43 5574 6705-0
Fax : + 43 5574 6705-22
Info-refat@axima.eu.com
www.axima.eu.com



Motor compressor unit. Photograph not binding.

RELIABLE, STURDY AND EFFICIENT

- High-quality parts made of alloys resistant to all applications including ammonia.
- Oil level without stopping the compressor through the manual pump.
- Simplified maintenance.
- Customized frames.

Evaporation	Condensation	5		0		-5		-10		-15		-20		-25	
		C. kW	A.P. kW	C. kW	A.P. kW	C. kW	A.P. kW	C. kW	A.P. kW	C. kW	A.P. kW	C. kW	A.P. kW	C. kW	A.P. kW
2 CF 80	+30	73.4	11	59.6	11	48.8	10.3	39.5	9.9	31.9	9.3	25.6	8.5	19.4	7.5
	+35	69.8	12	56.4	11.9	46.1	11.3	37.2	10.3	29.7	9.6	23.8	8.8		
	+40	66.2	13.1	53.5	12.9	43.3	12	34.9	10.6	27.5	9.8				
3 CF 80	+30	110.1	16.5	90.7	16.6	73.2	15.5	59.3	12.9	47.9	14	38.4	12.8	29.1	11.3
	+35	104.7	18	85.5	17.3	69.2	17	55.8	13.6	44.6	14.4	35.7	13.2		
	+40	99.3	19.7	80.2	18	65	18	52.4	14.4	41.3	14.7				
4 CF 80	+30	146.8	22	118.6	22.1	97.6	20.6	79	19.5	71.8	20.9	51.2	16.9	38.8	15
	+35	139.6	24	112.8	23.9	92.2	22.6	74.4	20.5	66.8	21.6	47.6	17.7		
	+40	132.4	26.2	107	25.8	86.6	24	69.8	21.3	61.9	22.1				
6 CF 80	+30	220.2	33	181.4	33.1	146.4	30.9	118.5	25.8	107.7	31.4	76.8	25	58.2	22.5
	+35	209.4	36	170.9	34.6	138.3	33.9	111.6	27.2	100.2	32.4	71.4	26.5		
	+40	198.6	39.3	160.5	36.1	129.9	36	104.7	28.7	92.8	33.1				
8 CF 80	+30	293.6	44	237.2	44.2	195.2	41.2	158	39	161.5	47.1	102.4	33.9	77.6	30
	+35	279.2	48	225.6	47.8	184.4	45.2	148.8	40.8	150.4	48.6	95.2	35.3		
	+40	264.8	52.4	214	51.5	173.2	48	139.6	42.7	139.2	49				

Power and capacity for :
• Rotating speed : 1450 rpm
• Sub-cooling of 5° K and superheat of 0° K

C. = Frigorific capacity.
Refrigerant : NH₃ (ammonia)

A.P. = Absorbed power.

Data not binding. For guidance only

After-Sales service by:

